



**SCHOOLS HEBRIDEAN SOCIETY**



**EXPEDITIONS SUMMER 1976**

## 1976 EXPEDITIONS

GROUP O (12¾-14 years)*	LEWIS	1 Oth-26th August
GROUP N (14-15 years)*	NORTH UIST	20th July-6th August
GROUP M (15-16 years)*	HARRIS	19th July-4th August
GROUP L (16-17 years)*	SOUTH UIST	9th-27th August
GROUP K (17 years and over)	RHUM	8th-27th August

The dates of the expeditions are the dates of departure from and return to London, and are subject to alteration on the publication of the final train and steamer timetables.

\* Age on the 1st August 1976

### Twelfth Annual Society Conference

The Twelfth Annual Society Conference will be held at Ratcliffe College, Leicester from 2nd-4th January 1976. Full details may be obtained from the Conference Organiser: David Bradshaw, Seymour Street, Hollingswood, Oldham,

### SENIOR EXPEDITIONS 1976 RHUM GROUP K

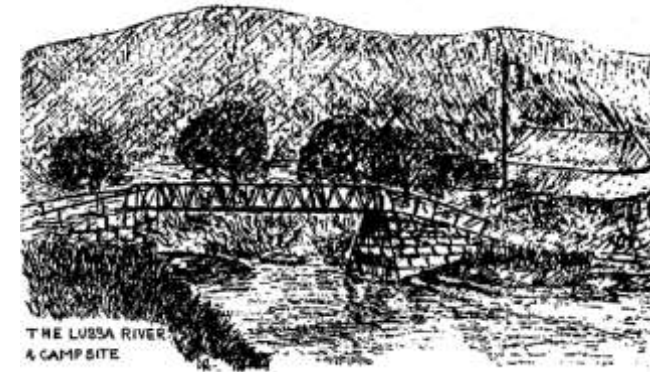
A diamond shaped island just South of the Black Cuilins of Skye, Rhum is a place of contrasts. The only inhabited village, Kinloch, boasts an early twentieth century castle complete with organola, a post office, and the houses of the Nature Conservancy workers who use the island as an enormous laboratory for various projects ranging from red deer to forestry. Away from this haven of trees and gardens the island is harsh and uncompromising with miles of bay and mountain, midges, and manx shearwaters' nesting sites. The coastline is mainly rugged and steep but there

are a few sandy beaches. It offers habitats for a large variety of flora and fauna, with opportunities for hill walking and climbing unequalled in the Hebrides.

This expedition will be small in membership and will concentrate on those projects and activities which its members wish to carry out. They will be expected to participate in the planning and organisation to a greater extent than on other expeditions. This is intended to provide a useful introduction to those wishing to become officers in future years.

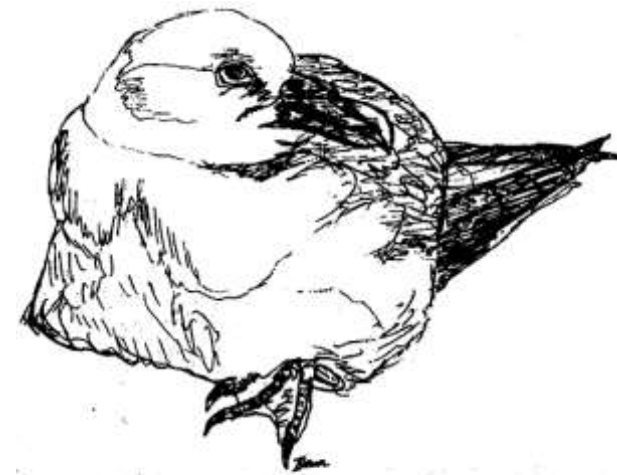
### SOUTH UIST EXPEDITION GROUP L

Situated in the Southern Outer Hebrides, South Uist offers an excellent opportunity for those wishing to stay in an isolated and beautiful place for two and a half weeks. The site is on the North shore of Loch Eynort on the East coast of the island, and lies in the shadow of Beinn Mhor (2035ft). Otters and eagles are to be found near at hand as well as magnificent scenery. Opportunities for canoeing and rock climbing abound, whilst simply exploring the island, its beaches, bird sanctuaries, archaeological sites and mountains would take many times the actual duration of the expedition.



### GROUP N

### NORTH UIST EXPEDITION

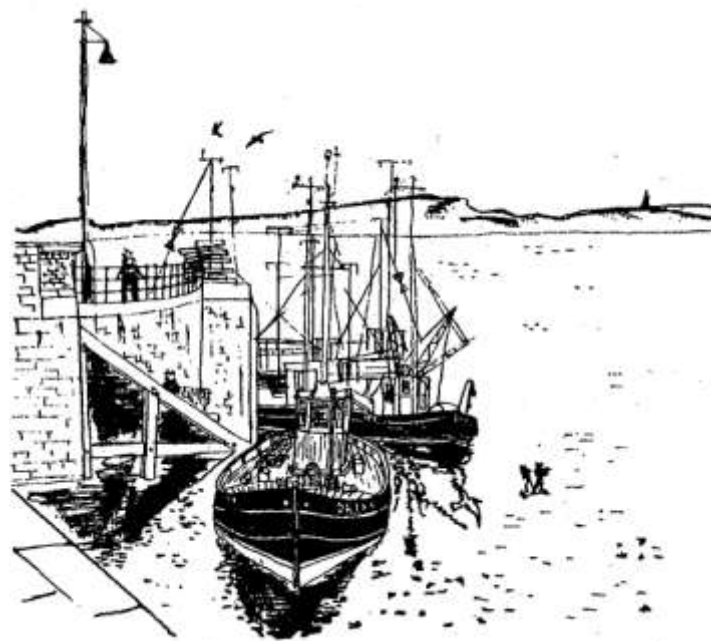


FRED THE FULMAR

Tucked away in the extreme South East of the island the cottage of Eaval is situated at the foot of the mountain of the same name. From the summit one can see mile upon mile of moorland and water stretching away to the gold sand beaches of the West coast. The cottage has ample space for cooking, drying, and project work, and is easily accessible by boat at high tide, although it is a long two mile walk to the nearest road. It is a place where fishing, canoeing, project work and exploring all offer great possibilities, but above all it is a place of beauty and peace.

## HARRIS EXPEDITION

The village of Rhenigidale is isolated from the capital of Harris, Tarbert, apart from a seven mile footpath that climbs 1,800ft as it winds its way along the rocky coast. Five families live there, their only links with civilisation being a radio-telephone, and infrequent boats from Scalpay, a nearby island. The expedition site is within a few yards of the village in a small field normally used to graze sheep. It differs from other sites in its proximity to people. The area is harsh but the scenery possesses a definite grandeur, and opportunities for canoeing and climbing are near at hand. Other points of interest are a deserted village and Clisham which is the highest mountain in the Outer Hebrides.



## GROUP M

## THE SCHOOLS HEBRIDEAN SOCIETY



Was Born after an expedition to the island of Rhum organised by ten undergraduates and schoolboys in 1959.

Has since 1960 successfully organised more than 50 expeditions to more than 20 different sites in the Hebrides and Shetlands.

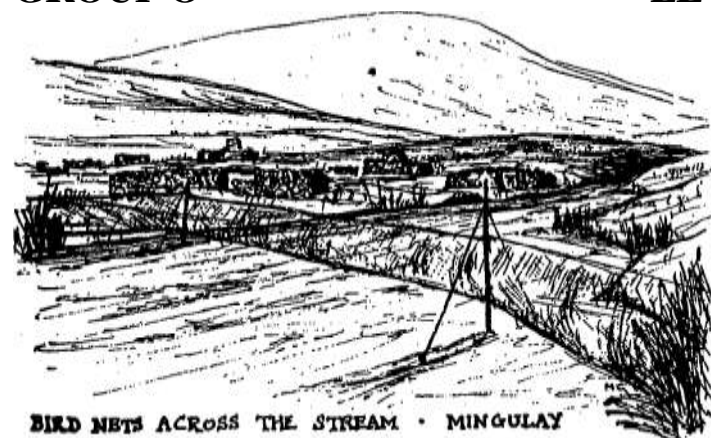
Is, in 1976 mounting the expeditions shown in this leaflet, and providing the opportunity for boys of all ages to experience an unusual and challenging situation. Believes that the beauty and remoteness of the Hebridean setting contributes to the value derived from expeditions by members



M.C.

## GROUP O

## LEWIS EXPEDITION



BIRD NETS ACROSS THE STREAM • MINGULAY

The West of Lewis is ideal for an activity-orientated expedition and it is to be expected that there will be plenty of climbing and canoeing. Although Lewis is the largest of the Hebridean islands the population is mainly clustered around Stornoway on the East coast or in the crofting communities in the North. The campsite is close to the Uig sands, and there can be few parts of Scotland that can beat the Uig Hills as a backdrop. Whatever ones interests there is much to explore here.



Provides the opportunity for boys to learn the techniques of climbing, walking, and canoeing under the instruction of specialist officers.

Encourages project work, depending upon the nature of the island. The study of ornithology usually features in every expedition.

Supplies tents, food, boats, canoes, and climbing equipment — but each expedition builds its own furniture from driftwood!

Ensures that safety rules are strictly adhered to — it is always possible to obtain a doctor even on the remotest islands.

Limits the size of each expedition to between twenty five and thirty five boys, with a Leader and between six and nine officers.

Welcomes all boys who are prepared to regard their expedition as something more than a 'holiday', and are willing to work for its success

# INFORMATION

How to apply. Fill in the application form attached to this prospectus and send it to Mrs. M. Jones, Moss Lane, Timperley, Cheshire. Once the formalities have been completed, successful applicants will be put in touch with leaders.

**Cost.** It is anticipated that the cost of each Expedition will be £49.50 plus travelling expenses. However, the Society is a non-profit making organisation, and the fee charged simply reflects the cost of running the Expedition. At the time of printing it is impossible to accurately forecast the effects of inflation until next summer, and the Company must therefore reserve the right to impose a surcharge in the event of costs rising more than anticipated. In the past certain Local Education Authorities have been prepared to help with the cost of sending boys on an Expedition. If you think that favourable consideration might be given to such an application, you are advised to contact your son's Headmaster or the Local Education Authority.

**Travel.** Wherever possible this is arranged by the Society taking advantage of special party rates offered by British Rail.

**Administration of expeditions.** The collection of fees and travel costs is done centrally by the Board's representative. After a boy has been selected for an expedition all other arrangements should be made through the leader.

**Medical Requirements.** Any relevant information about which the expedition medical officer should know must be stated on the application form in the space provided. We strongly advise anti-tetanus injections for all expedition members.

**Insurance.** As well as arranging comprehensive insurance for itself and its proprietor, the Schools Hebridean Company Limited, the Society arranges insurance of the personal belongings of all boys and officers against loss or damage by accident or misfortune for the duration of the expedition. The limit of the cover is £100 for boys and £200 for officers, and it is subject to the exclusion of the first £5 in respect of each and every loss or damage, and certain other exclusions. Copies of the policy can be obtained from the Secretary.

**Membership.** All new applicants who are selected for an expedition are required to become members of the Society. The fee for three year membership is £3.

**Report.** Anyone wishing for more detailed information about the Society, or wishing for a copy of the latest Report, should write to Mrs. Mary Jones, 19 Moss Lane, Timperley, Cheshire.

**Officers.** Anyone wishing to be considered as an officer on one of the expeditions should write to the Chairman, P.N. Renold (address below)

**Cancellation.** In the event of a member cancelling his place on an expedition more than four weeks before the Expedition, a cancellation fee of £5 will be retained by the Society. If a member cancels his place less than four weeks before the start of his expedition, the full fee will be retained by the Society, and returned only if his place can be filled by someone else.

**Alterations.** The Company reserves the right to alter in whole or in part at any time all plans and arrangements of whatsoever nature contained in this prospectus or in any other Company or Society publication.

The Policy of the Society is decided by the Board of Directors.

Signed: P.N. Renold (Chairman), ** Dobcross, Oldham,	J.D. Lace (Secretary), ** Sneyd Park, Bristol,
---	---

*Directors:* P.N. Renold, B.A. (Chairman), A.J. Abbott, M.A., F.R.G.S., P. Caffery, J. Cullingford, J.C. Hutchison, B.Sc., C.Eng., J.D. Lace, G. Macpherson, M.Sc., C.Eng., R.L.B. Marshall, A.C.A., M. Rayne, J.S.K. Round, B.A., R.P. Weatherly, B.A.

**SCHOOLS HEBRIDEAN SOCIETY**  
Proprietor: the schools Hebridean company limited (Registered as a  
Charity)

## APPLICATION FORM

1. Full Name (Surname BLOCK CAPITALS, please).....  
  
(Please underline your usual Christian name)
2. Date of Birth .....
3. Home Address .....
4. School Address.....  
.....  
.....
5. Father's (or Guardian's) Name .....
6. Expedition for which you are applying .....
7. Name and address of Form-master/Housemaster/Headmaster who has stated  
that he is prepared to give you a reference
8. Can you swim 50 yards? .....
9. Are there any medical facts that should be given special consideration? If so,  
please  
state them in the space provided on the back of this form.
10. Please state (in the space provided on the back of this form) any experience  
or  
qualifications which you think will enable the Leader to select you—interest  
and  
hobbies should also be included.
11. Boy's Signature .....
12. To be signed by Parent or Guardian:  
  
I agree to my son.....taking part in the Schools  
Hebridean "  
  
Society's ..... Expedition 1976 and I agree to hold the  
Company  
harmless and indemnified in respect of any bodily injury to my son, and in  
respect of any loss or damage to his effects.  
  
*Signed*..... Telephone  
Number  
  
*Date*.....

This form when completed should be sent direct to Mrs. M. Jones, Moss Lane,  
Timperley, Cheshire.